



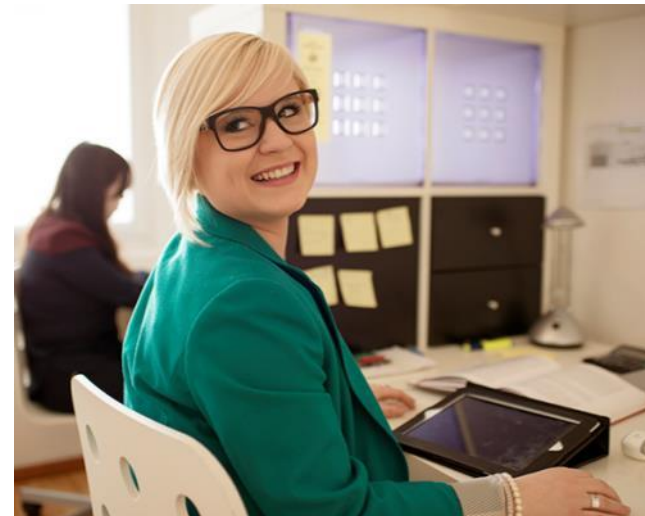
GLION
INSTITUTE OF HIGHER EDUCATION

GIHE & A NEW GENERATION OF LEARNERS

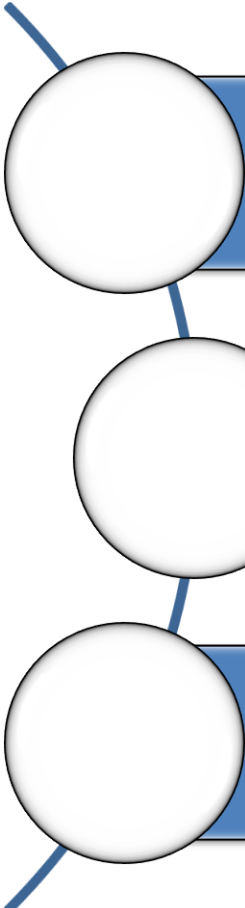
Philippe Kopcsan
March 2017

OBJECTIVE

- Each generation comes to GIHE with varying characteristics that distinguish them from their predecessors.
- Teaching at GIHE has evolved into a learning centered classroom that focuses on student learning rather than on teaching delivery.
- The purpose of my presentation is to introduce the Millennial Student and to identify various characteristics that influence teaching and learning at GIHE.



WHO ARE THE MILLENIALS?



The Millenila Student is the largest and most diverse generation to ever attend college and university.

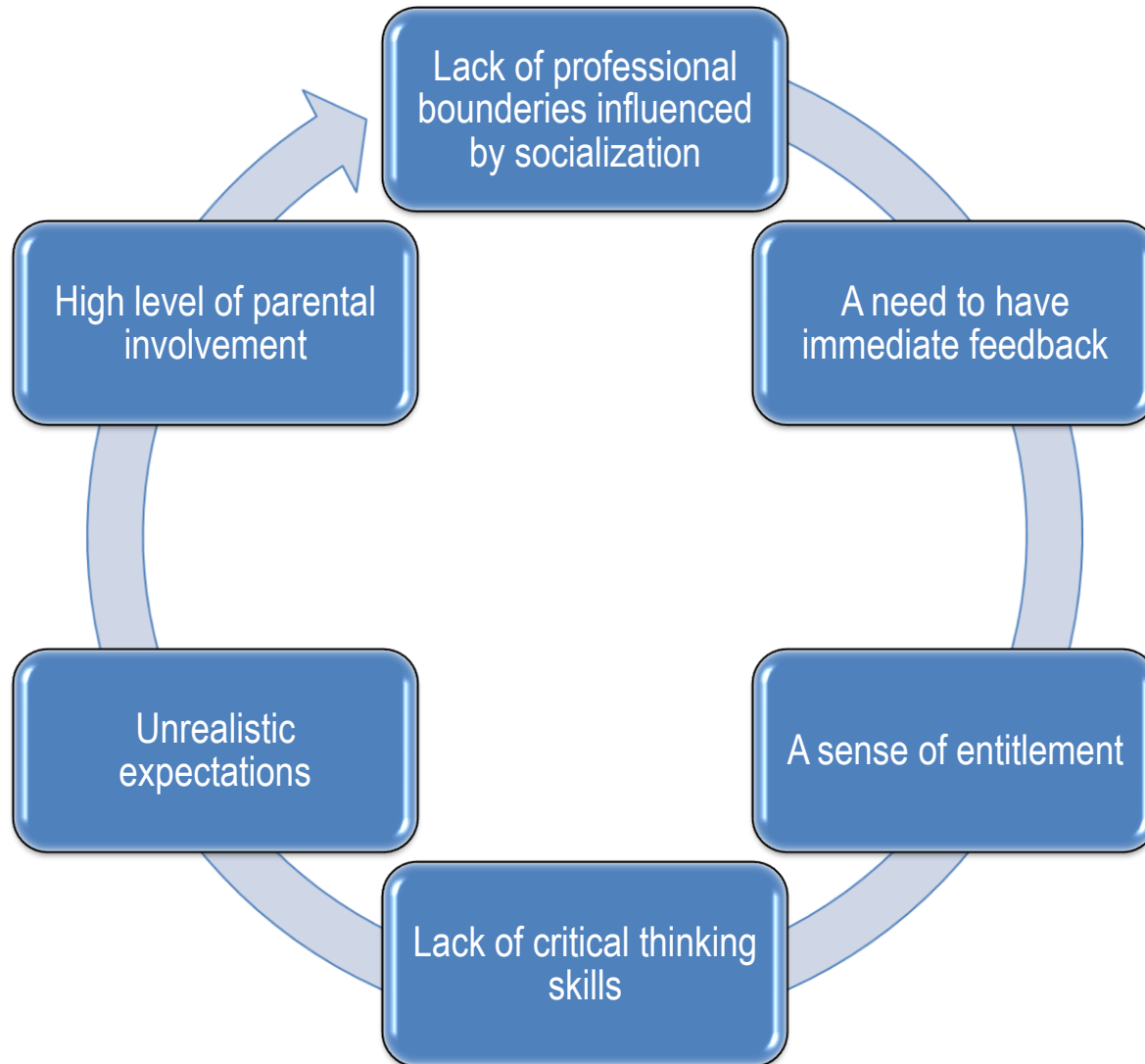
They are unlike their predecessors who attended college and university 10, 15, or 20 years ago.

Their collective personality, thought processes, and educational tendencies are unique to traditional classroom practices and educational environments.

A young man in a dark suit, white shirt, and red tie is walking through a modern glass entrance. He is carrying a black briefcase in his right hand and is smiling at the camera. The background shows a bright, sunny day outside with some greenery and a building. The text "Notable Characteristics?" is overlaid in a light orange color on a dark blue semi-transparent background.

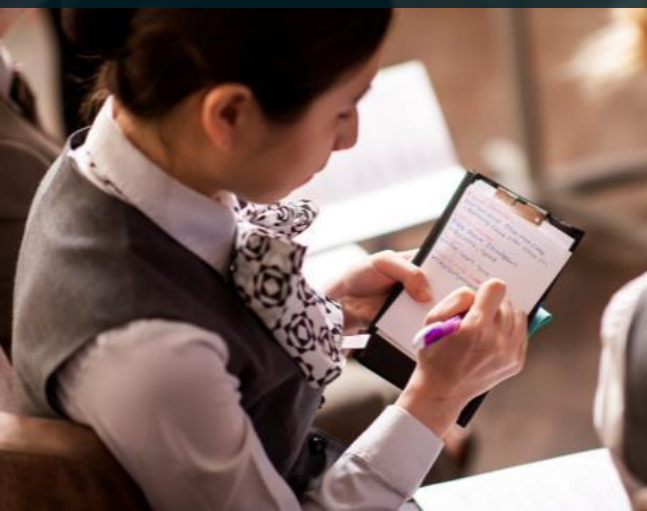
Notable Characteristics?

... CONT.





Defining the Millennial Student



... CONT.

Defining Characteristic	Characteristic Development	Classroom Application
Special	<ul style="list-style-type: none">- Rewards for participation	<ul style="list-style-type: none">- Provide rewards for individual and group work- Provide feedback- Teach to self-reward
Sheltered	<ul style="list-style-type: none">- Structured- Enforcement of rules and regulations	<ul style="list-style-type: none">- Learning centered syllabus- Clear instructions and expectations of assignments- Course calendar with test and assignment dates- Lesson learning outcomes

... CONT.

Defining Characteristic	Characteristic Development	Classroom Application
Team Oriented	<ul style="list-style-type: none">- Works well in groups- Socially active	<ul style="list-style-type: none">- Collaborative learning- Cooperative learning- Interactive learning- Opportunities for in and out of class social learning activities
Confident	<ul style="list-style-type: none">- High level of optimism- Technologically savvy- Want to assist in creating own knowledge	<ul style="list-style-type: none">- Provide clear definitions and paths to success in class- Include variety of technology in teaching and assignments- Provide constructive and formative feedback

... CONT.

Defining Characteristic	Characteristic Development	Classroom Application
Pressured	<ul style="list-style-type: none">- Perform when being judged- Immediate and continual feedback on progress	<ul style="list-style-type: none">- Link content to 'real life' applications- Provide feedback in various forms including technological means- Timely feedback- Simulations and case work through technology and non-technology instructional delivery.
Achieving	<ul style="list-style-type: none">- Challenges grades and testing methods	<ul style="list-style-type: none">- Develop well defined grade appeals policy- Integrate a variety of valid evaluation methods

... CONT.

Defining Characteristic	Characteristic Development	Classroom Application
Conventional	<ul style="list-style-type: none">- Respect for cultural differences	<ul style="list-style-type: none">- Utilize problem solving by integrating sociological situations from a variety of cultures

CONCLUSION

- The Millennial generation is currently enrolled in higher education with a new set of characteristics and values.
- These students face ambiguity and the challenges of self responsibility as they enter college and university.
- They are more likely to succeed if they have clear expectations and guidelines for success.
- Group dynamic learning is their preference but group activities must be carefully designed so independent and critical thinking can develop.



... CONT.

- Feedback is extremely important and must be provided in both didactic and clinical settings in a timely and orderly fashion.
- Today's educator must understand their Millennial generation audiences. By understanding the Millennial student and how they learn, the educator will be more successful in creating a learning centered environment.





GLION
INSTITUTE OF HIGHER EDUCATION

THANK YOU
www.glion.edu